

# COASTAL JIBS

Snowpark equipment  
2022/2023 • CATALOG





We have come a long way since the very first rail was built and brought to our local ski and snowboard hill over 16 years ago! It has been a challenging but rewarding journey. From day 1, our constant drive to improve our products and services has never stopped and has helped us develop a large number of satisfied clients. It is a great privilege for us to be a part of the skiing and snowboarding industry, and we look forward to the next 15 years of exceeding your expectations in product quality and safety!

Some figures....

Over the years, we have built more than 1,300 features, used approximately 100,000 feet of pipe and steel tubing, 1,000 sheets of PE plastic, 2,300 sheets of plywood and aluminum and over 85,000 nuts and bolts!

Thank you to everyone who has been involved along the way!

**Catalogue Coastal Jibs 2022**  
**© Coastal Jibs. 2022**

Printing: Précigrafik  
Graphic Design: Myriam Lemire  
3D Design: Brendan O'Brien  
Editing: James Mackeigan  
Editing: Mathieu Martel  
Text: René Caza, Benjamin Mbemba  
and Pierre-Étienne St-Armand

Any reproduction, printing, or adaptation of this publication, by any means, whether electronic, mechanical, photographic or microfilm, cannot be done without prior permission of Coastal Jibs Inc.



# CONTENTS

Quality Warranty .....04  
Sliding Options .....05  
Technical Overview .....06  
Mini-Shred Features ..... 10  
Junior Features .....12  
Classic Features .....16  
Pipes .....28  
Jibs.....34  
Wall Rides .....40  
Custom Features .....44  
Snowtools .....46  
Accessories .....48  
Other Services.....50  
Photo Credits.....51

While some people may think of skiing and snowboarding as great outdoor activities, we feel it's a way to express our individuality within every motion and detail.

When it comes to engineering new features, connecting metal pieces together or refurbishing our customers' installations, the same attention to detail goes into our products and services and is what sets us apart.

It's our responsibility to keep up with trends while providing safe options to encourage progression and stimulate excitement and that's why my team and I are fully committed to offering the best products in all of North America.

*Richard Côté*

Richard Côté  
Founder / President







Mont Tremblant QC



### QUALITY

At Coastal Jibs, we put our heart and soul into creating a premium quality product that goes beyond expectations. Our entire product line is carefully handcrafted in our Sherbrooke (Québec) workshop to ensure a quality that is truly unbeatable!



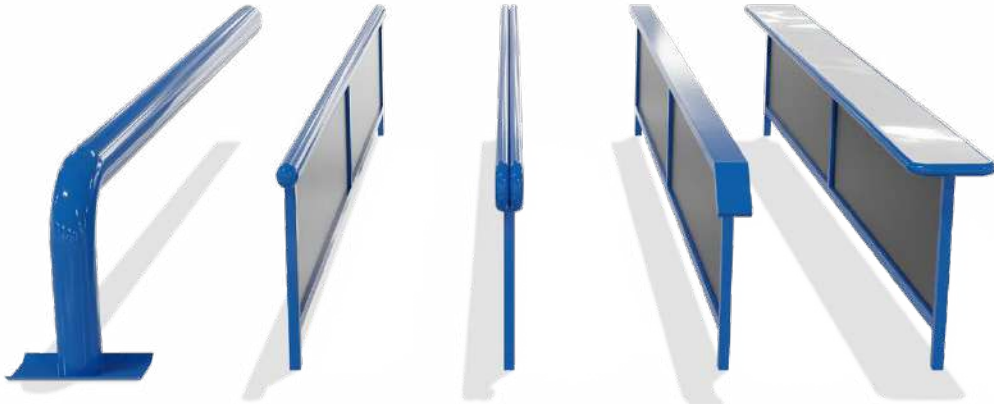
### WARRANTY

Coastal Jibs offers a 5-year limited warranty on all of its product. Colligated with the refurbishment program, a 10-year extended warranty is also available.

\* This warranty does not apply to any failure, damage or defect caused by the installation, use or maintenance of the product by the buyer, its employees, customers, users, successors or assigns.

### SLIDING OPTIONS

Innovation plays a large roll at Coastal Jibs which is why we offers several sliding surfaces that suit all skill levels. We also offer custom built features to meet all of your specific needs.



**PIPE**  
Diameter: 6" | 8" | 10"



**SINGLE PIPE**  
Diameter: 4" | 6"



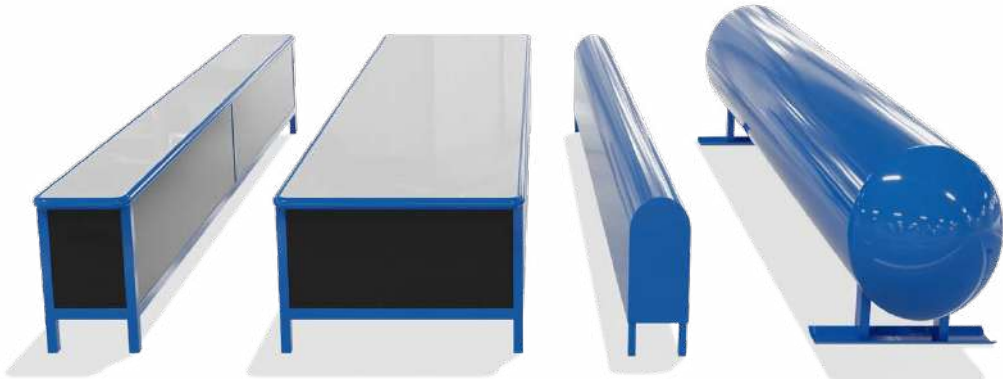
**DOUBLE PIPE**  
Width: 5"



**HSS TUBING**  
Width: 5" | 6"



**"T" BOX**  
Width: 10" | 14"



**FULL BOX**  
Width: 18" | 24"



**DANCEFLOOR**  
Width: 42"



**MAILBOX**  
Width: 16" | 30"

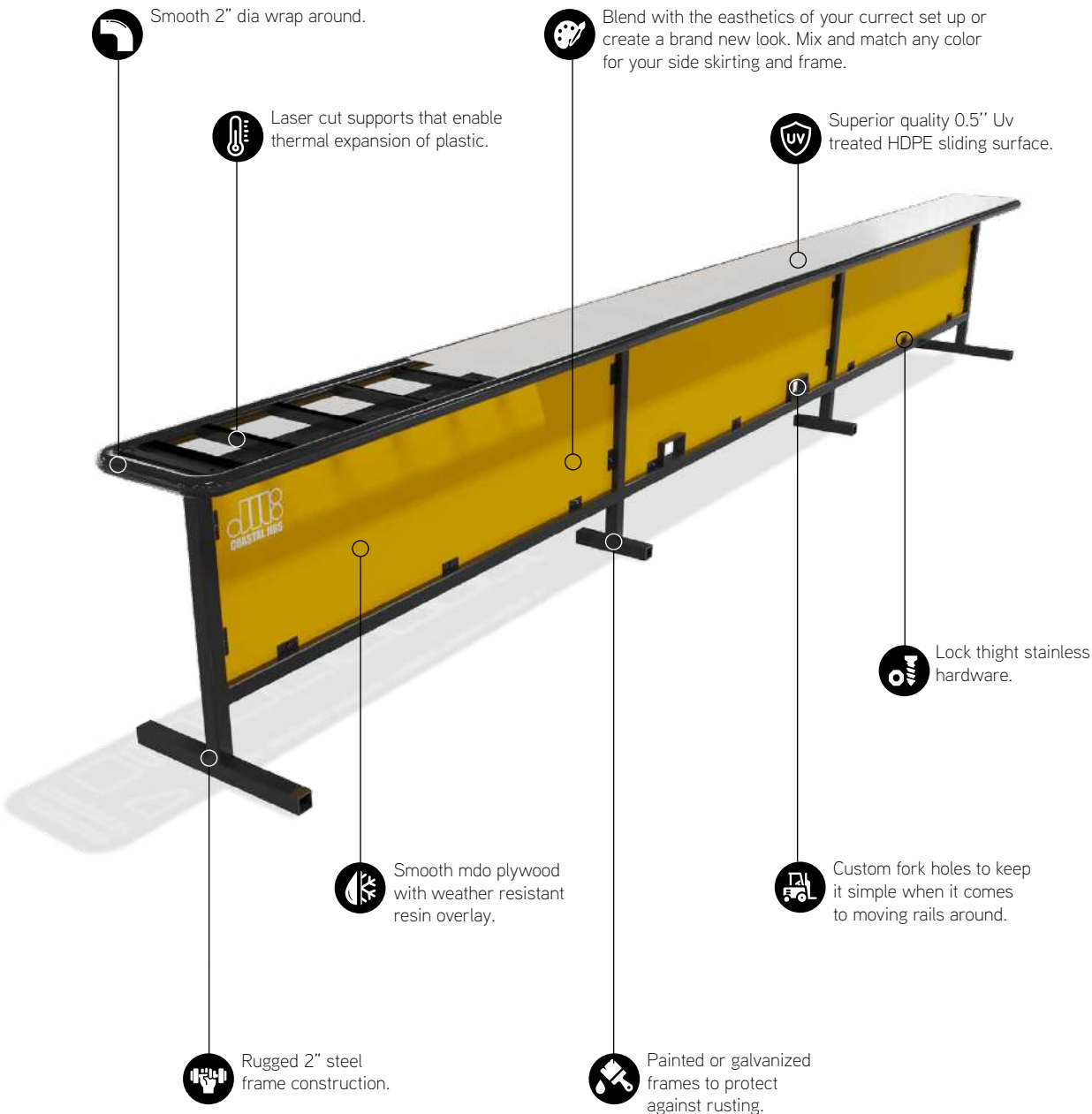


**JIBTANK**  
Diameter: 20" | 24" | 30" | 60"



# TECHNICAL OVERVIEW

Everything is in the details





**OUR PRODUCT REFLECTS OUR  
PASSION FOR THE SPORTS**





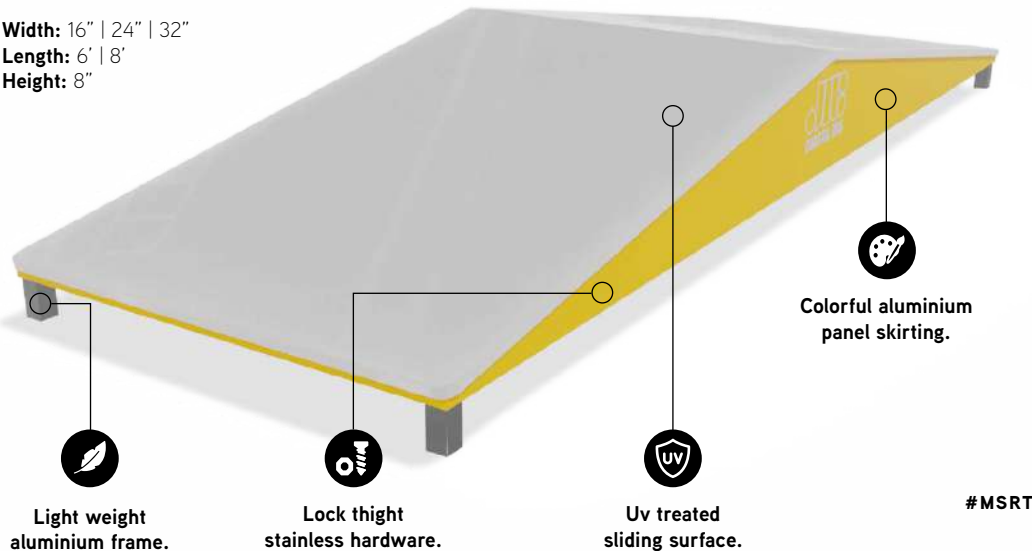


# MINI-SHRED FEATURES Designed for the next generation

The range of Mini shred features has been designed to target young riders. The miniature sizes as well as the nonexistent metal side profile make these accessible and safe for the kids. Thanks to their ground level entry and exit points, the Mini Shred features allow the little riders to enjoy an eased learning experience from their very first day at the mountain!

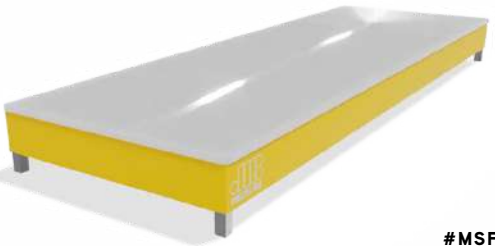
## MINI ROOFTOP

Width: 16" | 24" | 32"  
Length: 6' | 8'  
Height: 8"



## MINI FLAT

Width: 16" | 24" | 32"  
Length: 6' | 8'  
Height: 6"



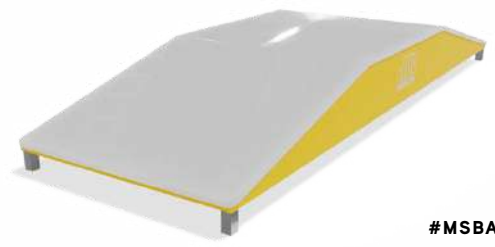
## MINI RAMP

Width: 16" | 24" | 32"  
Length: 6' | 8'  
Height: 8"



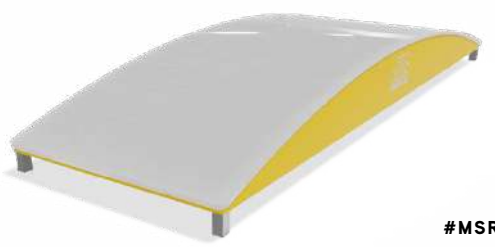
## MINI BATTLESHIP

Width: 16" | 24" | 32"  
Length: 6' | 8'  
Height: 8"



## MINI RAINBOW

Width: 16" | 24" | 32"  
Length: 6' | 8'  
Height: 8"



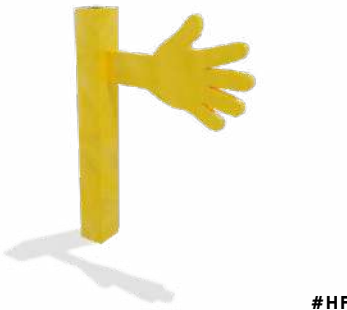
## TEETER TOTTER

Width: 16" | 24" | 32"  
Length: 6' | 8'  
Height: 10"



## HIGH FIVE

Height: 36" | 60"





## JUNIOR FEATURES

### The first step to progress

The junior series consists of unique beginner obstacles that are ideal for all age groups. The wider surfaces and relaxed angles allow for entry-level skiers and riders to initiate themselves into the exciting world of rails and boxes. The higher skilled skiers and riders can also practice and perfect their technique safely on these mellow features!





## JR BUTTERBOX

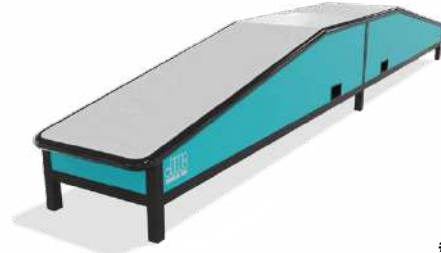
Length: 12' | 16'  
Height: 24"



#JBU

## JR SUNKEN SHIP

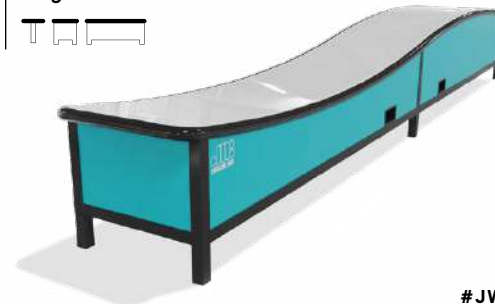
Length: 12' | 16'  
Height: 34"



#JBA

## JR WAVE

Length: 16' | 20'  
Height: 34"



#JWA

## JR STEP-DOWN

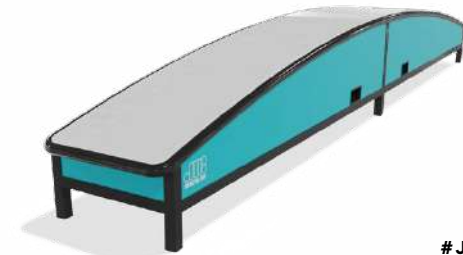
Length: 12' | 16'  
Height: 28"



#JSD

## JR RAINBOW

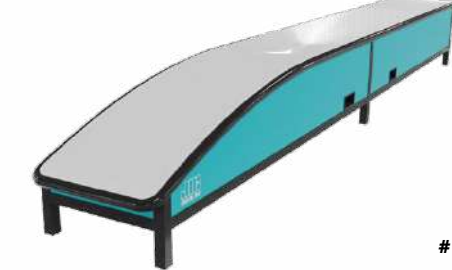
Length: 12' | 16'  
Height: 30"



#JRB

## JR RIDE ON

Length: 12' | 16'  
Height: 24"



#JRO

## JR WHIP

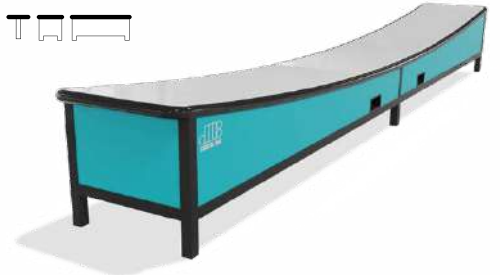
Length: 12' | 16'  
Height: 30"



#JWP

## JR ROCKER

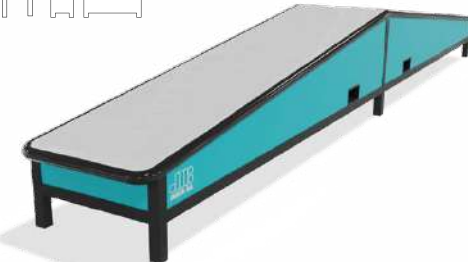
Length: 12' | 16'  
Height: 30"



#JRK

## JR ROOFTOP

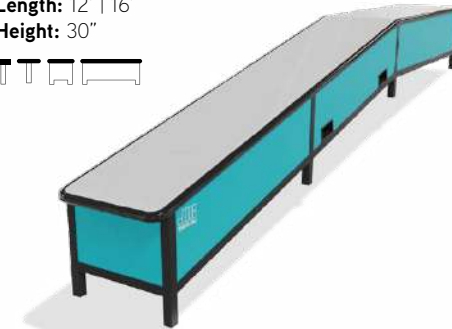
Length: 12' | 16'  
Height: 30"



#JRT

## JR FLAT DOWN

Length: 12' | 16'  
Height: 30"



#JFD

## JR TUBE

Length: 12' | 16'  
Height: 30"



#JTU



Mont Tremblant, QC



## CLASSIC FEATURES

### Never out of style

All you could ever ask for! Over 500 formats available for intermediate to expert level skiers and riders. Every feature is available in different sliding surfaces. The right mix of classic features provides diversity and creativity for your terrain park. From a 4 in. diameter single pipe to a 42 in. dance floor. Coastal Jibs can meet the needs of all skill levels.







# FLAT

Length: 16' | 20' | 24' | 32' | 40'  
Height: 34"



#F

# FLAT DOWN

Length: 20' | 24' | 32' | 40'  
Height: 34"



#FD

# BATTLESHIP

Length: 24' | 32' | 40'  
Height: 48" | 60"



#BA

# STEP-DOWN

Length: 20' | 24' | 32'  
Height: 28" | 34"



#SDN

# ROOFTOP

Length: 20' | 24' | 32'  
Height: 48" | 60"



#RF

# STREET DONKEY

Length: 16' | 20' | 24' | 32'  
Height: 34"



#SSD

# WATERFALL

Length: 24' | 30' | 36'  
Height: 40"



#WF

# FIRECRACKER

Length: 16' | 20' | 24' | 32'  
Height: 34"



#FC

# KICKER

Length: 16' | 20' | 24' | 32'  
Height: 48"



#K

# JAMMIN'

Length: 16' | 20' | 24' | 32' | 40'  
Height: 34"



#JMN



Shawnee Mountain, PA





## BUTTER PIPE

Length: 16' | 20' | 24' | 32'  
Height: 34"



#BP

## DOUBLE WHAMMY

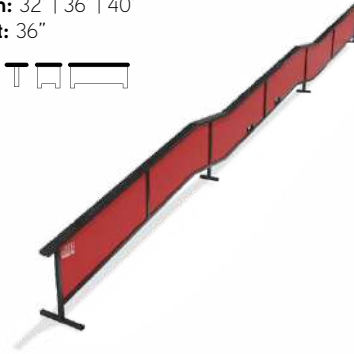
Length: 20' | 24' | 32'  
Height: 34"



Option: One side removable  
#DW

## QUAD KINK

Length: 32' | 36' | 40'  
Height: 36"



#QK

## Y SHAPE

Length: 20' | 24' | 32'  
Height: 34"



#Y

## DOUBLE WAMMY+

Length: 20' | 24' | 32'  
Height: 34"



Option: One side removable  
#DW+



Olympic Stadium,  
Montréal, QC



## ELBOW

Length: 20' | 24' | 32'  
Height: 34"



#EL

## DOUBLE ELBOW

Length: 24' | 32'  
Height: 34"



#DEL

## DOUBLE RAINBOW

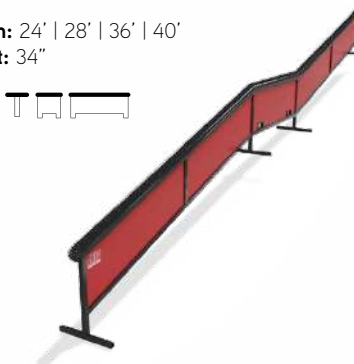
Length: 20' | 24' | 32'  
Height: 34"



Option: One side removable  
#DR

## DOWN-FLAT-DOWN

Length: 24' | 28' | 36' | 40'  
Height: 34"



#DK

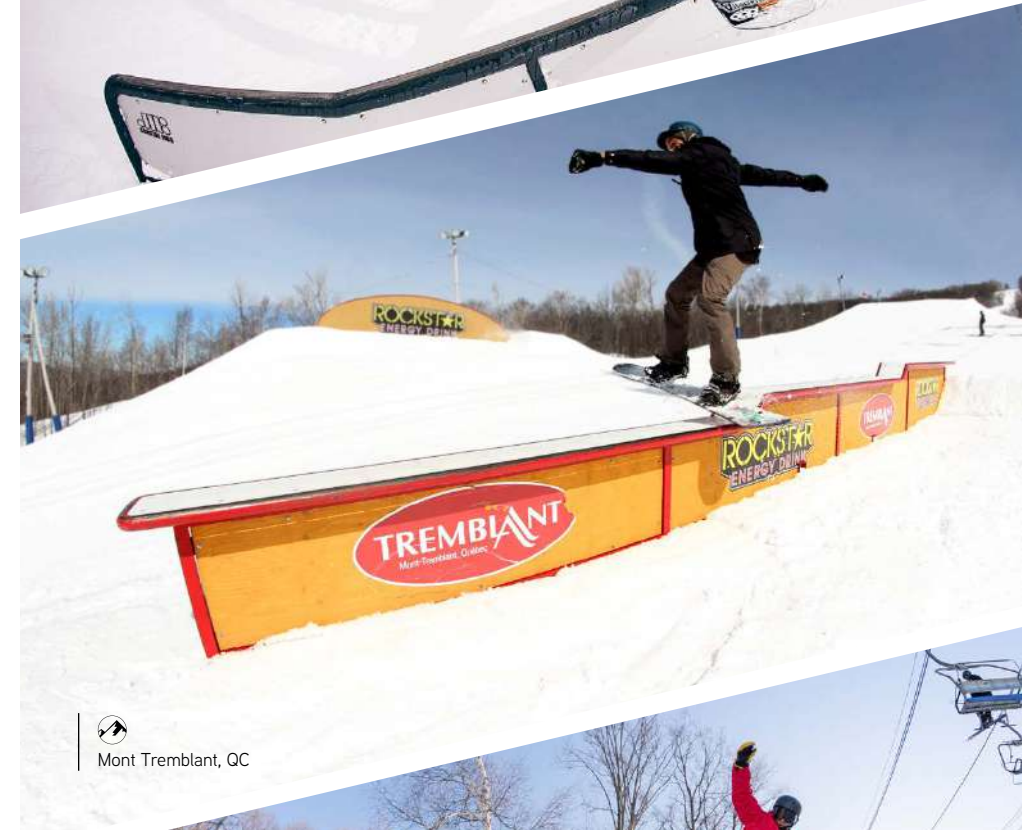
## FLAT-DOWN-FLAT

Length: 24' | 32' | 36' | 40'  
Height: 34"



#FK









## PICNIC

**Length:** 12' | 16' | 20' | 24' | 32'  
**Height:** 36"



#PN

## X BOX

**Length:** 20' | 24' | 32'  
**Height:** 48" | 60"



#X



North Shore Project 2022,  
La Réserve, QC



## FLAT DOWN PICNIC

**Length:** 20' | 24' | 32'  
**Height:** 34"



#RPN

## BARN BOX

**Length:** 16' | 20' | 24' | 32'  
**Height:** 40"



#BRN

## ROCKER

**Length:** 20' | 24' | 32'  
**Height:** 40" | 60"



#U

## MUSTACHE

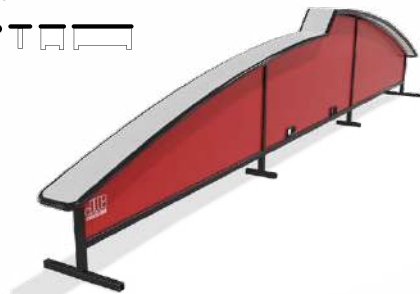
**Length:** 20' | 24' | 32'  
**Height:** 42"



#MT

## DROP BOW

**Length:** 20' | 24' | 32'  
**Height:** 24" | 60"



#DB

## SHOT-DOWN

**Length:** 20' | 24' | 32' | 40'  
**Height:** 48"



#SD

## RAINBOW

**Length:** 20' | 24' | 32'  
**Height:** 60" | 72"



#RB

## RAINBOW C

**Length:** 16' | 20' | 24' | 32'  
**Height:** 48" | 72"



#RC



## MACHETE

**Length:** 20' | 24' | 32' | 40'  
**Height:** 40"



#MA

## WAVE

**Length:** 24' | 32' | 40'  
**Height:** 42"



#W



Mont Castor, QC



## CAMEL

**Length:** 32' | 40'  
**Height:** 42"



#CA

## CURVE

**Length:** 16' | 20' | 24' | 32'  
**Height:** 34"



#C



Mont Saint-Anne, QC



Whiteface, NY



## S SHAPED

**Length:** 32' | 36" | 40'  
**Height:** 34"



#S

## SNAKE RAIL

**Length:** 32' | 36" | 40'  
**Height:** 36"



#SN



Bromont, QC





Smokey Mountain, NL

## PIPES

### Endless trick possibilities

Drawing their inspiration from the industrial scene, the pipes mimic the wacky forms of plant piping, providing a unique look. The wide diameter of these tubes allows a large contact surface, which facilitates the sliding for the riders. Their rounded shapes are the perfect solution to make the complex modules even safer.







## FLAT

**Length:** 16' | 20' | 24' | 32' | 36'  
**Height:** 36"  
**Diameter:** 6" | 8" | 10"



#PF

## SWAT PIPE

**Length:** 16' | 20' | 24' | 36'  
**Height:** 34"  
**Diameter:** 6" | 8" | 10"



#PSP

## STEP DOWN

**Length:** 20' | 24' | 32' | 36'  
**Height:** 42"  
**Diameter:** 6" | 8" | 10"



#PSD

## WATERFALL

**Length:** 24' | 32' | 36'  
**Height:** 48"  
**Diameter:** 6" | 8" | 10"



#PWF

## FLAT DOWN

**Length:** 20' | 24' | 32' | 36'  
**Height:** 36"  
**Diameter:** 6" | 8" | 10"



#PFD

## ROOFTOP

**Length:** 20' | 24' | 32' | 36'  
**Height:** 60" | 72"  
**Diameter:** 6" | 8" | 10"



#PRT

## SIDE SKIRTING

All pipes are also available with side skirting.



## DOWN FLAT

**Length:** 16' | 20' | 24' | 32'  
**Height:** 36"  
**Diameter:** 6" | 8" | 10"



#PDF

## DOWN FLAT DOWN

**Length:** 24' | 32' | 36'  
**Height:** 36"  
**Diameter:** 6" | 8" | 10"



#PDK



Mont Sutton, QC



Ski La Réserve, QC





## ELBOW

**Length:** 20' | 24' | 32' | 36'  
**Height:** 36"  
**Diameter:** 6" | 8" | 10"



#PE

## BATTLESHIP

**Length:** 24' | 32' | 36'  
**Height:** 56" | 72"  
**Diameter:** 6" | 8" | 10"



#PBA



## Z SHAPE

**Length:** 24' | 32' | 36'  
**Height:** 36"  
**Diameter:** 6" | 8" | 10"



#PZ

## Y SHAPE

**Length:** 20' | 24' | 32' | 36'  
**Height:** 36"  
**Diameter:** 6" | 8" | 10"



#PY

## RAINBOW

**Length:** 16' | 20' | 24' | 32'  
**Height:** 60" | 72"  
**Diameter:** 6" | 8"



#PR

## S SHAPE

**Length:** 24' | 32' | 36'  
**Height:** 36"  
**Diameter:** 6" | 8"



#PS

## WAVE PIPE

**Length:** 24' | 32' | 36'  
**Height:** 42"  
**Diameter:** 6" | 8"



#PW

## C SHAPE

**Length:** 16' | 20' | 24' | 32'  
**Height:** 36"  
**Diameter:** 6" | 8"



#PC

## HICCUP

**Length:** 20' | 24' | 32' | 36'  
**Height:** 42"  
**Diameter:** 6" | 8" | 10"



#PHC

## SEX CHANGE

**Length:** 16' | 20' | 24" | 32'  
**Height:** 72"  
**Diameter:** 6" | 8" | 10"



#PSC



## JIBS

### Realease your creativity

Our Jibs series consists of unique shaped features, which presents multiple trick possibilities to all the hard-core jibbers out there. These are built mostly out of metal for an old school feel.







## JIB TANK

**Length:** 16' | 20' | 24' | 30'  
**Height:** 36"  
**Diameter:** 20" | 24" | 30" | 60"



#TNK

## ELBOW TANK

**Length:** 20'  
**Height:** 36"  
**Diameter:** 20" | 24" | 30"



#ETK

## JERSEY BARRIER

**Length:** 10' | 12' | 14' | 16'  
**Height:** 36"



#JB

## GATE

**Length:** 14'  
**Height:** 40"  
**Diamètre:** 6"



#GA

## KINKED TANK

**Length:** 20' | 24'  
**Height:** 60"  
**Diameter:** 20" | 24" | 30"



#KTK

## DONKEY TANK

**Length:** 16' | 20' | 24'  
**Diameter:** 20" | 24" | 30"



#DKT

## BANKED BARRIER

**Length:** 12' | 16' | 20' | 24'  
**Height:** 60"



#BB

## LOLLYPOP

**Height:** 72" | 84" | 96"  
**Diameter:** 36" | 42"



#LP

## BONK TANK

**Height:** 4' | 8'  
**Diameter:** 30" | 60"



#BT

## SHORT TANK

**Length:** 4' | 6' | 8'  
**Height:** 36"  
**Diameter:** 20" | 24" | 30"



#STK

## MUSHROOM

**Height:** 8"  
**Diameter:** 36" | 48"



#MU



Shawnee Mountain, PA





## COPING

**Length:** 8' | 16' | 20' | 24'  
**Height:** 36"



#CP

## WHEEL

**Width:** 40"  
**Diameter:** 8' | 10' | 12'



#WL

## MAILBOX

**Length:** 10' | 12' | 16' | 20' | 24'  
**Width:** 16" | 30"  
**Height:** 24'



#ML

## KINKED MAILBOX

**Length:** 20' | 24' | 32'  
**Width:** 16" | 30"  
**Height:** 24'



#KML

## BALL

**Diameter:** 37"



#BL

## OCTO TUBE

**Length:** 16' | 20' | 24'  
**Width:** 8"  
**Height:** 40"



#OT

## JUNK MAIL

**Length:** 24' | 28' | 32'  
**Width:** 16" | 30"  
**Height:** 24'



#JML



Blue Mountain Resort, PA

## CANON

**Length:** 12' | 14' | 16' | 20'  
**Height:** 60" | 72"  
**Diameter:** 6" | 8" | 10"



#CA

## POLE JAM

**Length:** 6' | 8' | 10'  
**Diameter:** 4" | 6" | 8"



#PJ



Mont Orford, QC





## WALLRIDE FEATURES

### The centerpiece of your snowpark

Wall rides are often some of the biggest and most impressive features of any terrain park. Their large surfaces are ideal display areas for graphics and sponsor logos. To facilitate the moving of wall rides, we weld them to a ski-type frame, so they can be slid rather than lifted! All wall surfaces are covered with HDPE plastic to ensure the best sliding sensation.

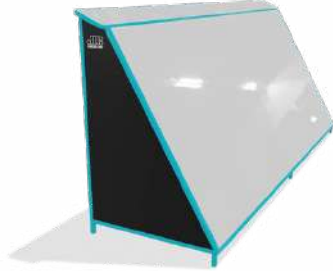






## WALLRIDE

Length: 8' | 16' | 20' | 24'  
Height: 8'



#WA

## ROOF

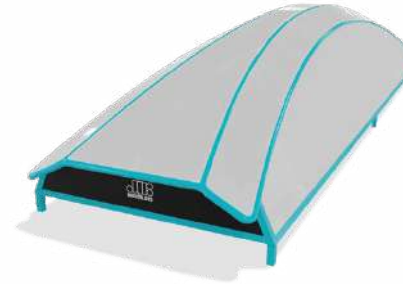
Length: 16' | 20' | 24'  
Height: 48"



#RF

## TURTLE SHELL

Length: 20' | 24' | 32'  
Height: 48" | 60"

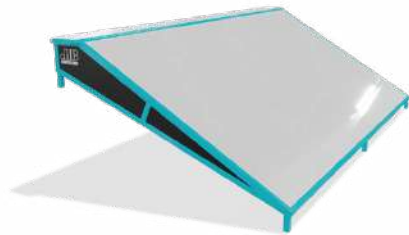


#TS



## BANKED WALL

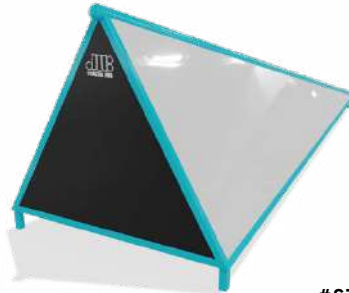
Length: 16' | 20' | 24'  
Height: 24"



#BW

## STAR WARS

Length: 16' | 20' | 24' | 32'  
Height: 60" | 72"



#STW

## RAINBOW WALL

Length: 16' | 20' | 24' | 32'  
Height: 72"



#RW



## SPINE

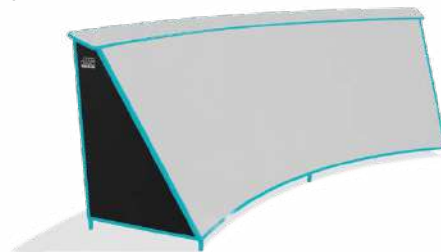
Length: 8' | 16' | 20'  
Height: 72"



#SP

## CURVE WALL

Length: 16' | 20' | 24'  
Height: 8'



#CW

## SKINNY WALL

Length: 1' | 2' | 4'  
Height: 8'



#SW



## CUSTOM FEATURES

Let your imagination run free

At Coastal Jibs, we provide top quality event set-ups that will blow the mind of your competitors and spectators. We offer custom features allowing you to create the course of your dreams! Whether it's replicating an existing urban environment with complex staircase configurations or creating a unique set up that will give you the atmosphere you want, we can do it all! Sponsors and media play a big role in the event world and we want to help you make an impact by creating something original. Challenge us with your ideas and visions and we will make your projects become reality!



Today's Canvas, Stoneham, QC



Mont Tremblant, QC

"We always trust coastal jibs for the manufacture of our terrain parks and events rails and boxes. The coastal Jibs merchadises are quality products that meet our high Standards."



Ride Shakedown 2014,  
Mont Saint-Sauveur, QC

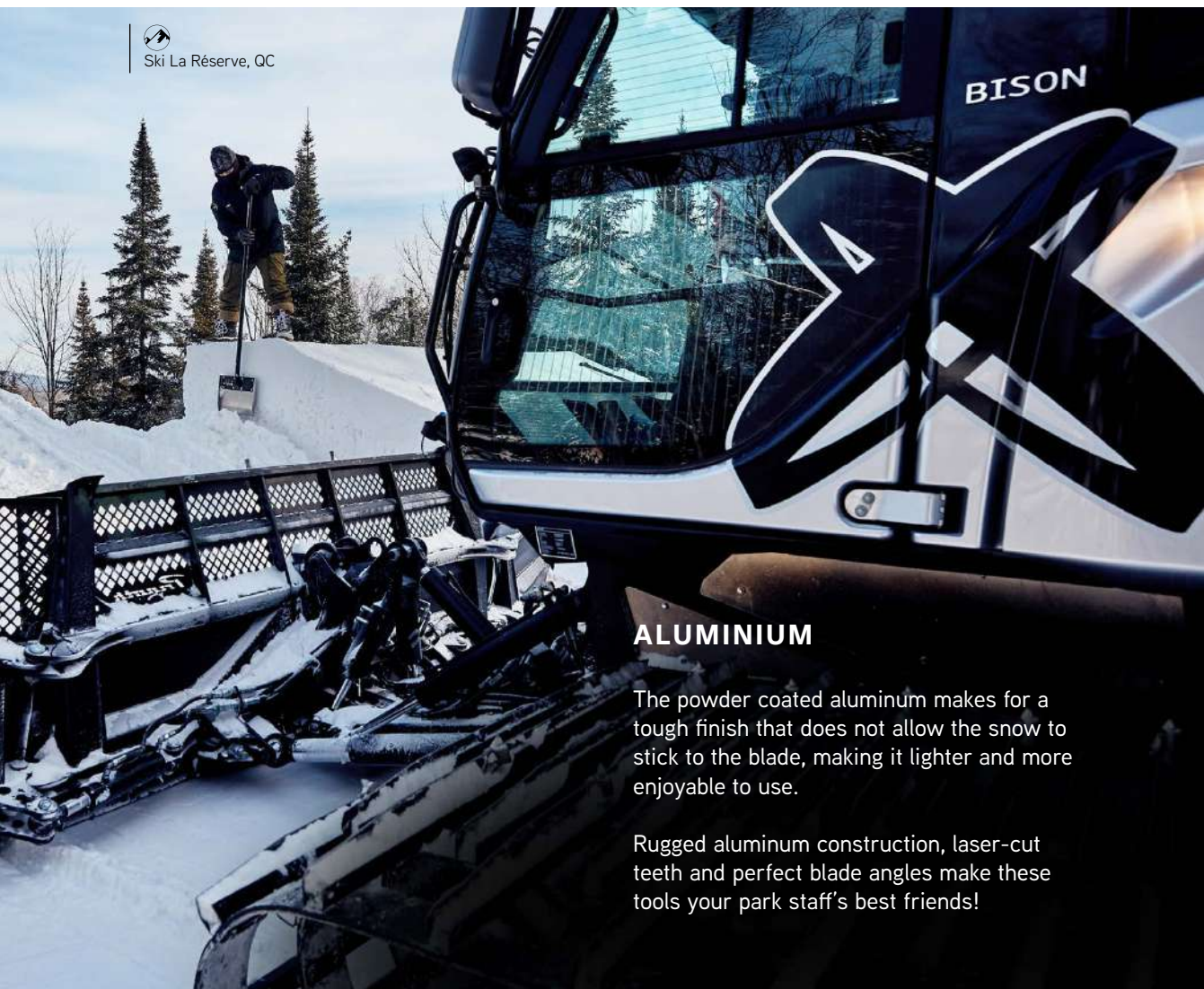
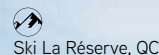




## SNOWTOOLS

### Your park staff's best friends

Would you cut steak with a plastic knife? Neither would we. Building a nice terrain park is one thing but maintaining it is a different story. That is why we offer specialized snowtools that can make your job more enjoyable. The versatility of these tools lets you accomplish your job more efficiently and faster than ever before.



### ALUMINIUM

The powder coated aluminum makes for a tough finish that does not allow the snow to stick to the blade, making it lighter and more enjoyable to use.

Rugged aluminum construction, laser-cut teeth and perfect blade angles make these tools your park staff's best friends!

### SCOOP

**Length:** 60"  
**Width:** 26"

Digging out features after a big dump of snow? No problem! The large scoop has a larger blade that allows you to move great quantities of snow around. Ideal for heavier tasks



### SWINGER

\* New design

**Length:** 60"  
**Width:** 26"

From maintaining lift stations to working on pipe transitions, the Swinger is the ideal snow tool for all jobs, whether small or medium sized. Its lightweight and sharp teeth allow you to easily cut through hard snow and ice.

\* Junior model available



### VERT SHOVEL

\* New design

**Length:** 60"  
**Width:** 10"

This razor-sharp stainless steel blade will make the sides of your jumps look like Lego Blocks! Ideal for shaping hips, berms, and anything that needs a precise clean cut.

\* D-shape Telescopic handle option







## ACCESSORIES

All you ever needed

Ski La Réserve, QC

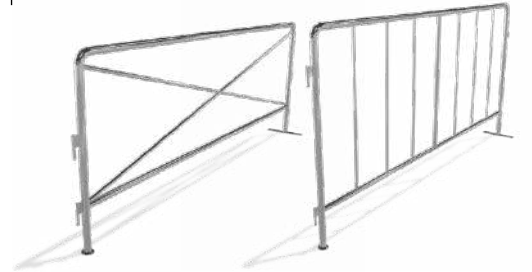
### PARK BENCH

Length: 8' | 12' | 16'  
Height: 36"



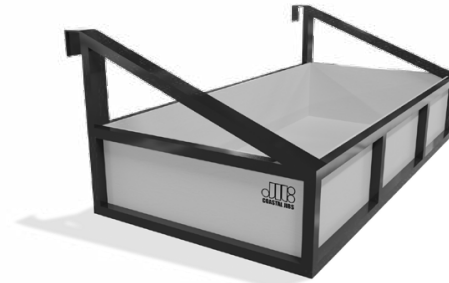
### TRAFFIC GATES

Length: 96"  
Height: 36" | 42"



### BASKET

Length: 4'  
Width: 6'



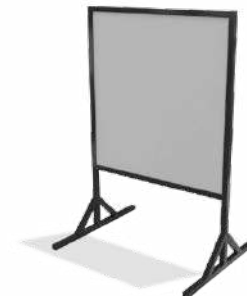
### ADJUSTABLE GROOMER FORKS

Length: 4'  
Width: 2' - 6'



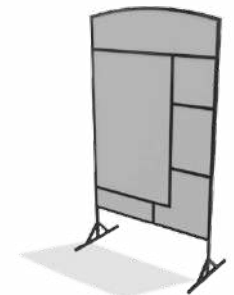
### SIGN FRAMES

Width: 24' | 36'  
Height: 4' | 8'



### MULTI SIGN FRAME

Width: 48"  
Height: 10'







 Mont Rigaud, QC

## GRAPHICS

Advertisement and graphics often play a large role in the everyday Terrain Parks. The unique shapes and large display areas of rails and boxes become the ideal location for your resort's logos and sponsors! We offer top quality vinyl graphics and artwork on our smooth side panels. Ask us for more details.


## OBSTACLE MAINTENANCE

We now offer a module maintenance service for our clients. This turnkey service is carried out directly on-site at your resort and allows to extend the life of your obstacles, but, especially, to ensure your customers' safety. Please contact us for more information.


## DELIVERY

Coastal Jibs offers delivery at extremely reasonable rates across all of Eastern Canada & U.S., not to mention FREE shipping on park orders of at least \$25,000 CAD.



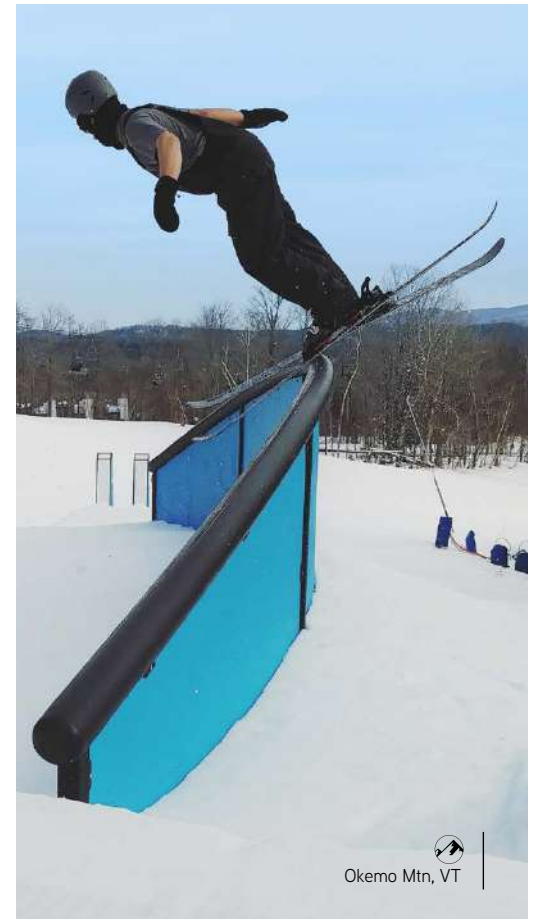
 Stoneham, QC




 Mont Saint-Sauveur-Avila, QC

## PHOTO CREDITS

Cover page: **Paul Mackay**  
 p.2: **Adréline Urbaine**  
 p.4, 44: **Kevin Lemaire**  
 p.6, 8, 23-1-2-3, 27-2-4: **Chartrand Photography**  
 p.10: **Burton Snowboards**  
 p.12: **James MacKeigan**  
 p.15, 45-2: **René-Pierre Normandeau**  
 p.16, 40: **Ashley Baron**  
 p.19: **Robert Farris**  
 p.20: **Jaysson Gallant**  
 p.22: **Étienne Dionne**  
 p.25, 53-2: **Julien Visse - Empire**  
 p.27-1: **Mont Castor**  
 p.27-3: **Matt Petricorne**  
 p.28: **Dru Kennedy**  
 p.31-1, 34: **Marc-André Lavoie**  
 p.31-2, 45-1, 53-1: **Éric Lamothe**  
 p.32: **Snowmission**  
 p.37: **Robert Farris**  
 p.39-1: **Live Fast Media**  
 p.39-2, 50-2, 51-2: **Richard Côté**  
 p.43-1: **Joseph Roby**  
 p.43-2: **Geoffroy Dubreuil**  
 p.46, 47, 48: **Today's Parks**  
 p.50-1: **Jason Armour**  
 p.51-1: **Alain Denis**  
 p.52: **Adréline Urbaine**



 Okemo Mtn, VT





Adrenaline Urbaine,  
Trois-Rivières, QC



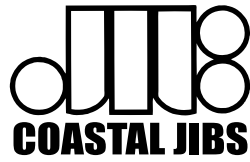
Empire City Troopers 2015, QC



North Shore Project 2022,  
La Réserve, QC







**WE BUILD WHAT YOU RIDE**

2022-2023

**1 819 238-5427**

[mail@coastaljibs.ca](mailto:mail@coastaljibs.ca)

[www.coastaljibs.ca](http://www.coastaljibs.ca)

